

Premium Jackup

General Description

Classification	ABS, A1 Self-elevating Drilling Unit.
Flag	Marshal Islands.
Overall Dimensions (Hull)	243.1 ft. long x 206 ft. wide x 26 ft. deep.
Legs	3 x 343 ft. long, Square.
Longitudinal Leg Center	129 ft.
Transverse Leg Center	142 ft.
Drafts*	17 ft. load line draft
Accommodation	120 persons.
Displacement*	28,375 kips at load line
Variable Deck Load*	6,950 kips Drilling / 4,550 kips Afloat.
Operating Water Depth	200 ft – 330 ft (design).
Maximum Drilling Depth	30,000 ft.
Cantilever Long. Skidding	70' Aft of transom (Rack-Pinion).
Drillfloor Trans. Skidding	15' Port/ Stbd (Rack-Pinion).

Drilling Equipment

Derrick	Pyramid 35' x 32' Base. 170' height. 1,500,000 lbs with 14 Lines.
Top Drive	750ST – 1150HP AC VFD Driven, 274 RPM Max Torque 66,000 ft-lbs @ 0-91RPM.
Travelling Block	750 ST, with 7 x 68" diameter sheaves.
Crown Block	Capacity: 750ST.
Drawworks	750ST on 14 x 1-3/4" lines, 3000 HP AC Vector Motors with 1.375-inch Drill Line.
Rotary Table	Rotary Table, 49-1/2", 750ST static.
Offline Stand building	309 stands DP and 10 stands 9-1/2" DC racking into Fingerboard.
Iron Roughneck	(1) 2-7/8"-10", 140,000 ft-lbs.
Pipe Racker	Vertical Pipe Racker with Max. Reach up to 4.6m.
Hydraulic Catheads	Catheads, torque 4,000 to 34,000 lbs line pull, 42" wire rope.
Fingerboards	30,000ft of standard drill pipe. 900 ft (10 stand) of 9-1/2" Drill Collar.

Power & Machinery

Main Power	(5) CAT 3516C-HD 2150HP, 600V 1530KW Genset.
Emergency Power	(1) CAT 3512 1920HP, 480V 1310KW Genset.

Special Features & Other Information

Helideck	S-61N, S-92, B-214. (D = 22.2m, MTOW = 12.6 MT).
Jacking	5 pinions per chord, 4 x chords per leg, 600 kips/pinion Normal holding capacity 371 kips/pinion Jacking capacity.

Capacities

Max Drilling Payload	6,950 kips.
Hook Load	1.5M lbs.
Rotary Load	1.5M lbs.
Setback Load	750 kips.
Liquid Mud	4,090 bbls (operational).
Sand Traps / Process tanks	295 bbls.
Pipe Storage (Main)	800 kips.
Pipe Storage (Cantilever)	800 kips.
Covered Sack Storage	1,250 lbf/ft ² .
Bulk Cement	5,250 cu.ft.
Bulk Barite	7,000 cu.ft.
Potable Water	2,529 bbls.
Drill Water	16,544 bbls (incl. combo tanks).
Diesel Fuel	4,031 bbls.
Base Oil	984 bbls.
Brine	984 bbls.

BOP & Well Control

BOP	13-5/8" BOP Stack - (1) 10k Annular - (2) 13-5/8" 10k double
Annular	(1) 13-5/8" Annular 10k (1) 30" Annular 1,000psi (1) 21-1/4" Annular 2,000 psi
Diverter	Model Drill-Quip 500 psi, Big Bore
Choke Manifold	4-1/16" 10K psi with (2) hydraulic and (2) manual chokes with glycol injection
Control Unit	Cameron 3k psi BOP Control Unit, 84 bottles 15 gal. capacity with reservoir tank capacity 1,200gal.

Mud System

Mud Pumps	(3) Triplex 9" liner / piston x 14" stroke, 7,500 psi, AC motors, 2 x 1,150 HP.
Mud Pits	Active Pits (8 Mud Pits, 1 Pre-Mix, 1 Slug)
Shale Shakers	(4) Shakers (1) Shaker with Mud Cleaner
Desanders & Desilters	Part of Mud Cleaner.
Degasser	(1) Vacuum Degasser (1) Rig floor Degasser
Mud System Pumps	(4) Degasser / Desander / Desilter Pumps – 150hp (2) Trip Tank Pumps - 35hp

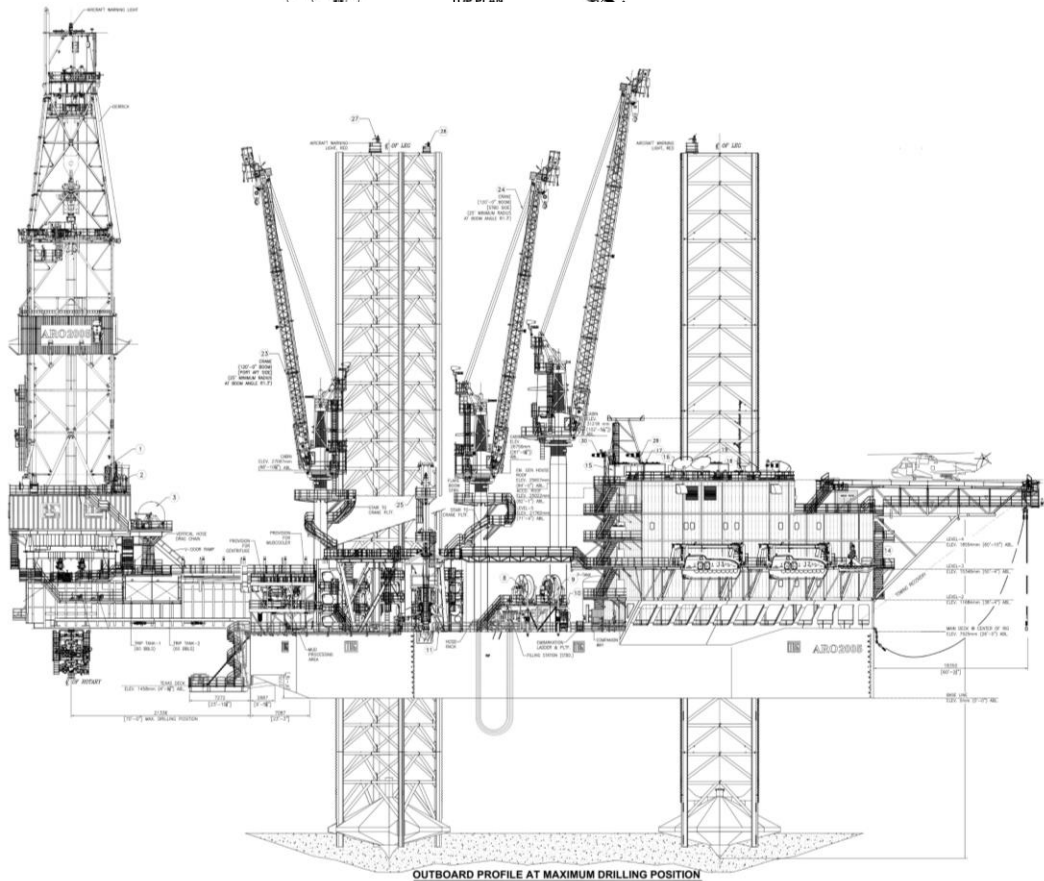
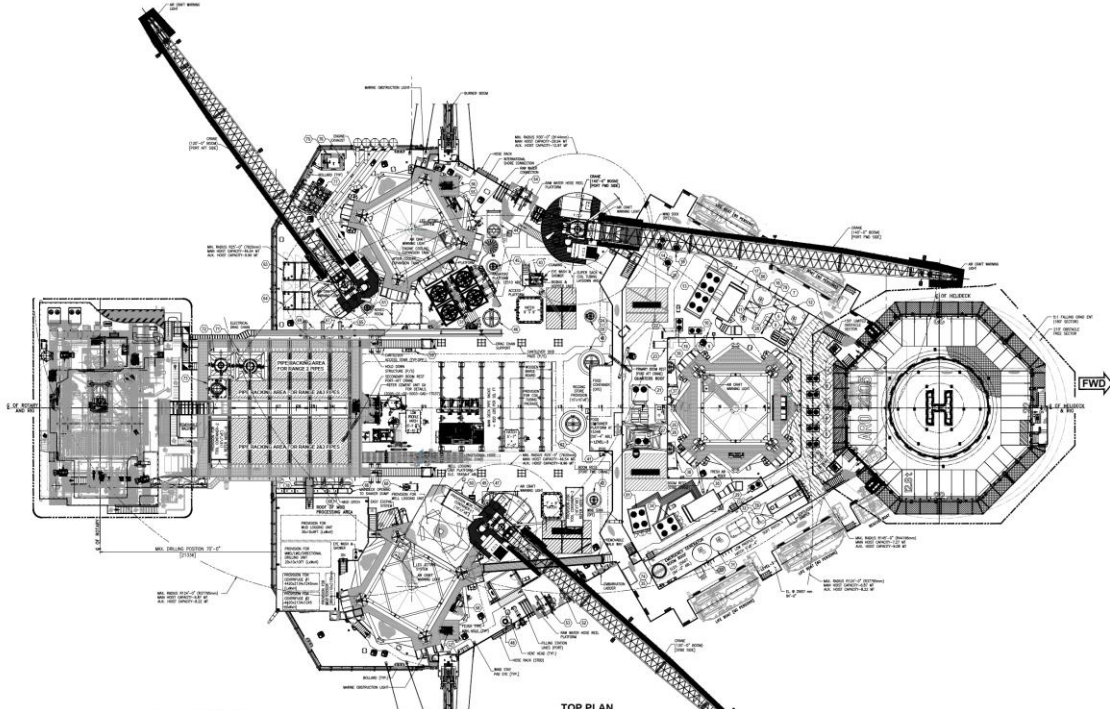
Cranes

Deck Cranes	(3) SEATRAX Pedestal Cranes. - (1) x 75ST x 140' boom - (2) x 50ST x 120' boom
--------------------------	--

These specifications are intended for general reference purposes only, as actual equipment and specifications may vary based upon subsequent changes, the contract situation and customer needs. All equipment shall be operated and maintained at all times, in compliance with ARO Drilling standard operating manuals, policies and procedures, and within its stated operational limits or continuous rated capacity, in order to assure maximum operational efficiency.



Premium Jackup



These specifications are intended for general reference purposes only, as actual equipment and specifications may vary based upon subsequent changes, the contract situation and customer needs. All equipment shall be operated and maintained at all times, in compliance with ARO Drilling standard operating manuals, policies and procedures, and within its stated operational limits or continuous rated capacity, in order to assure maximum operational efficiency.